



BXUV.U932
Fire Resistance Ratings - ANSI/UL 263

Page Bottom

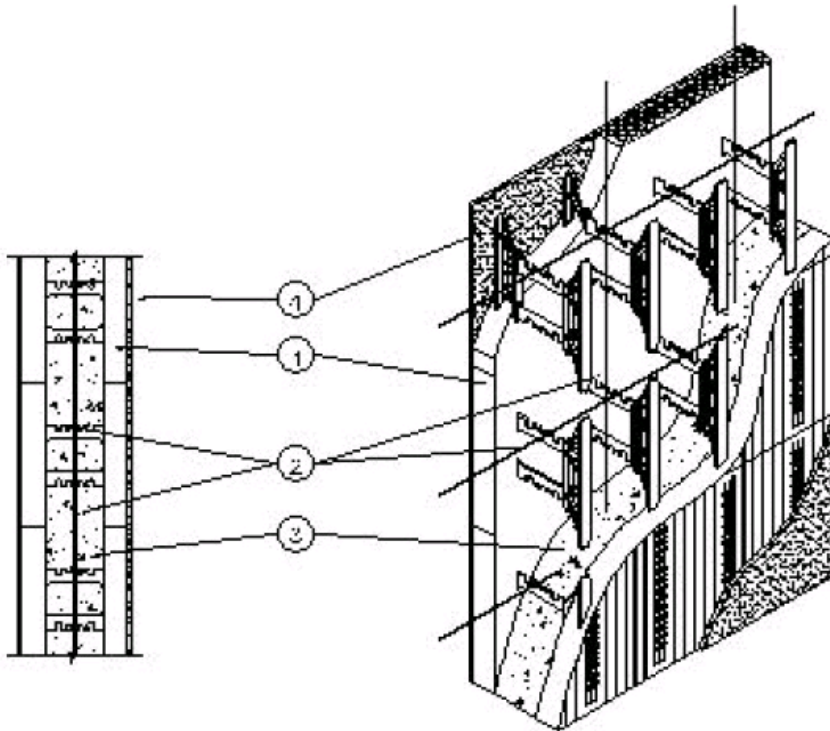
Fire Resistance Ratings - ANSI/UL 263

See General Information for Fire Resistance Ratings - ANSI/UL 263

Design No. U932

July 06, 2007

Bearing Wall Rating - 2, 3 or 4 Hr (See item 1)



1. **Insulated Concrete Forms*** — Standard form units comprised of two 48 in. by 16 in. by 2-3/4 in. thick expanded polystyrene (EPS) panels linked by polypropylene webs at 8 in. OC. The min width of the ICF cavity is 4 in. as shown in the table below. Height adjusters consist of 24 in. long, 4 in. high and 2-3/4 in. thick flat EPS panels. End caps vary with wall thickness from 4 in. to 10 in. wide, 16 in. high and 2-1/4 thick flat EPS panels. Assembly ratings depend on width of ICF cavity as shown in table below:

Assembly Rating, (Hr)	Min ICF Cavity Thickness, (in)
2	4
3	6.25
4	8

LOGIX INSULATED CONCRETE FORMS LTD

C O D E C O M P L I A N C E

www.logixicf.com

Good. Solid. Green.

7 - 4 6



2. **Reinforcing Steel** — No. 4 steel rebars inserted horizontally into each ICF course within polypropylene web notches. No. 4 rebars placed vertically at 16 in. OC into centre of ICFs.

3. **Normal Weight Concrete** — 145 ± 5 pcf density, 2900 psi nominal compressive strength.

4. **Gypsum Wallboard** — Min 1/2 in. thick, 1.5 psf min area density, 48 in. wide gypsum wallboard fastened to flanges of polypropylene webs with 2 in. long drywall screws at 16 in. OC vertically and horizontally. Joints covered with joint compound, covered with joint tape, and covered with an additional coat of joint compound. Screwheads covered with joint compound.

*Bearing the UL Classification Mark

Last Updated on 2007-07-06

[Questions?](#)

[Notice of Disclaimer](#)

[Page Top](#)

Copyright © 2007 Underwriters Laboratories Inc.®

The appearance of a company's name or product in this database does not in itself assure that products so identified have been manufactured under UL's Follow-Up Service. Only those products bearing the UL Mark should be considered to be Listed and covered under UL's Follow-Up Service. Always look for the Mark on the product.

UL permits the reproduction of the material contained in the Online Certification Directory subject to the following conditions: 1. The Guide Information, Designs and/or Listings (files) must be presented in their entirety and in a non-misleading manner, without any manipulation of the data (or drawings). 2. The statement "Reprinted from the Online Certifications Directory with permission from Underwriters Laboratories Inc." must appear adjacent to the extracted material. In addition, the reprinted material must include a copyright notice in the following format: "Copyright © 2007 Underwriters Laboratories Inc.®"

An independent organization working for a safer world with integrity, precision and knowledge.



C O D E C O M P L I A N C E



BXUV.U933
Fire Resistance Ratings - ANSI/UL 263

Page Bottom

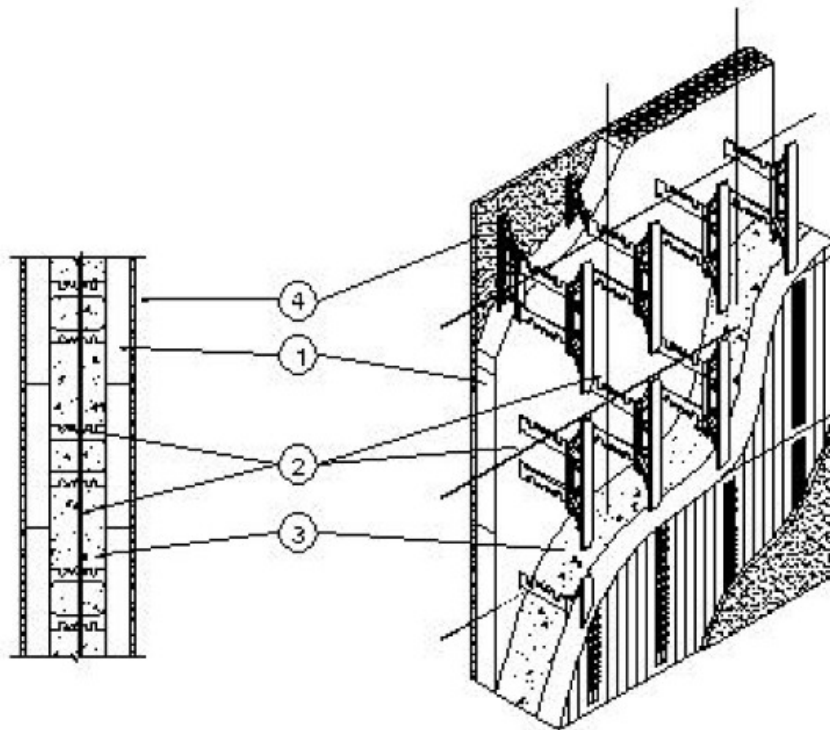
Fire Resistance Ratings - ANSI/UL 263

See General Information for Fire Resistance Ratings - ANSI/UL 263

Design No. U933

July 06, 2007

Bearing Wall Rating - 4 Hr



1. **Insulated Concrete Forms*** — Standard form units comprised of two 48 in. by 16 in. by 2-3/4 in. thick expanded polystyrene (EPS) panels linked by polypropylene webs at 8 in. OC. The min width of the ICF cavity is 6.25 in. Height adjusters consist of 24 in. long, 4 in. high and 2-3/4 in. thick flat EPS panels. End caps vary with wall thickness from 4 in. to 10 in. wide, 16 in. high and 2-1/4 thick flat EPS panels.

LOGIX INSULATED CONCRETE FORMS LTD

2. **Reinforcing Steel** — No. 4 steel rebars inserted horizontally into each ICF course within polypropylene web notches. No. 4 rebars placed vertically at 16 in. OC into centre of ICFs.

3. **Normal Weight Concrete** — 145 ± 5 pcf density, 2900 psi nominal compressive strength.

4. **Gypsum Board*** — Min 5/8 in. thick, 48 in. wide gypsum wallboard fastened to flanges of polypropylene webs with 2 in. long drywall screws at 16 in. OC vertically and horizontally. Joints covered with joint compound, covered with joint tape, and covered with an additional coat of joint compound. Screwheads covered with joint compound.

See Gypsum Board (CKNX) Category for names of manufacturers.

C O D E C O M P L I A N C E

www.logixicf.com

Good. Solid. Green.

7 - 4 8



*Bearing the UL Classification Mark

Last Updated on 2007-07-06

[Questions?](#)

[Notice of Disclaimer](#)

[Page Top](#)

[Copyright © 2007 Underwriters Laboratories Inc.®](#)

The appearance of a company's name or product in this database does not in itself assure that products so identified have been manufactured under UL's Follow-Up Service. Only those products bearing the UL Mark should be considered to be Listed and covered under UL's Follow-Up Service. Always look for the Mark on the product.

UL permits the reproduction of the material contained in the Online Certification Directory subject to the following conditions: 1. The Guide Information, Designs and/or Listings (files) must be presented in their entirety and in a non-misleading manner, without any manipulation of the data (or drawings). 2. The statement "Reprinted from the Online Certifications Directory with permission from Underwriters Laboratories Inc." must appear adjacent to the extracted material. In addition, the reprinted material must include a copyright notice in the following format: "Copyright © 2007 Underwriters Laboratories Inc.®"

An independent organization working for a safer world with integrity, precision and knowledge.



C O D E C O M P L I A N C E